

Internet-Based Remote Control using a Microcontroller and an Embedded Ethernet

Imran Ahmed,¹ Hong Wong,² and Vikram Kapila²

¹Department of Electrical and Computer Engineering

²Department of Mechanical, Aerospace, and Manufacturing Engineering
Polytechnic University, Brooklyn, NY 11201

Abstract

In this paper, we describe a recently developed DC motor position control experimental setup that can be accessed via the Internet. This setup consists of two primary elements communicating with each other: *i*) a server consisting of a low-cost microcontroller, Parallax's 40-pin Basic Stamp 2, interfaced with an embedded ethernet IC, Cirrus Logic's Crystal CS8900A, and *ii*) a client computer. The client computer sends/receives data to/from the microcontroller using the User Datagram Protocol packets. The client computer connects to the server using Java applets that allow the user to command the position of the motor via a graphical user interface. The interface includes a slider for commanding the motor position from 0°—360° and text input boxes for tuning the parameters of a position control algorithm "on-the-fly." A plot provides a visual display of the current position of the motor using real-time sensor data sent by the microcontroller. Our microcontroller-based remote control methodology can be readily applied to monitor and control other experimental hardware over the Internet.

1. Introduction

Microcontrollers are low-cost embedded systems that control and monitor consumer appliances, mobile robots, machinery, etc. Microcontrollers are widely used in applications that necessitate computing power delivered within a small form factor, e.g., cellular phones, calculators, digital wristwatches, etc. Because of space limitations, microcontrollers have limited connectivity options. For example, the type of connectivity provided for data communication to a personal computer (PC) user for data visualization and parameter adjustment "on-the-fly" is usually limited to a serial port interface. This interface is limited in that it allows only one user to control the

microcontroller and restricts that user to be in close proximity of the microcontroller. Enabling a microcontroller to communicate to a ubiquitous data communication network, e.g., the ethernet network, will allow developers and end-users to monitor and control microcontroller operated devices with greater flexibility.

In recent years, the ethernet network protocol has been widely adopted as the choice method of data communication for personal computers and other digital devices. Its popularity is primarily due to the immense use of the Internet, an information exchange infrastructure that communicates data via the ethernet network, by the general public. Furthermore, ethernet communication is readily available on most of the currently deployed PCs. As a data communication protocol, the ethernet is efficient. In all ethernet networks, devices can easily communicate at speeds of about 10 megabits-per-second, with some of the most recent ethernet networks communicating even at data speeds of 1 gigabit-per-second.

In this paper, we address the issues of *i*) imparting ethernet capabilities to a Basic Stamp 2 (BS2) microcontroller by interfacing it with an embedded ethernet board (EEB) and *ii*) providing a Java-based graphical user interface (GUI) to control and monitor the BS2. Capabilities of this integrated BS2 and EEB hardware are illustrated by using it to command and monitor a direct current (DC) motor test-bed remotely [1]. Although in this paper we focus on a 40-pin BS2 microcontroller, namely, BS2P40, our approach is applicable to any microcontroller possessing 16 or more digital input/output (I/O) pins. See Figure 1 for a picture of this experimental setup.

This paper is organized as follows. First, in Sections 2 and 3, we describe the hardware environment and the software environment, respectively, used in this paper. Next, in Section 4, we present an illustrative example of the ethernet-enabled BS2P40 controlling a DC motor. In Section 5, we propose future enhancements to be made to our hardware and software environment. Finally, some

concluding remarks are given in Section 6.

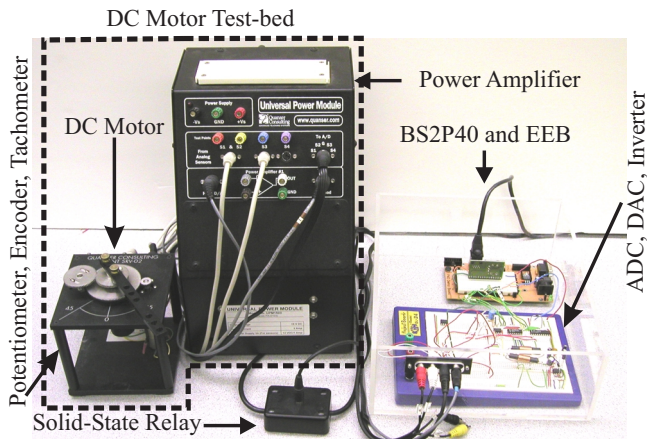


Figure 1: Picture of the DC motor test-bed controlled using an ethernet-enabled microcontroller

2. Hardware Environment

In this paper, a microcontroller interfaced with an EEB is used to control a DC motor. The microcontroller interfaces with the DC motor sensors using an analog to digital converter (ADC) and with the DC motor using a digital to analog converter (DAC). Ethernet data communication between the microcontroller and a remote web-client is performed using the EEB. Specifically, the EEB receives reference commands from the remote web-client and communicates the same to the microcontroller. In addition, the EEB receives sensory data from the microcontroller and communicates the same to the remote web-client. See Figure 2 for a schematic of the hardware environment.

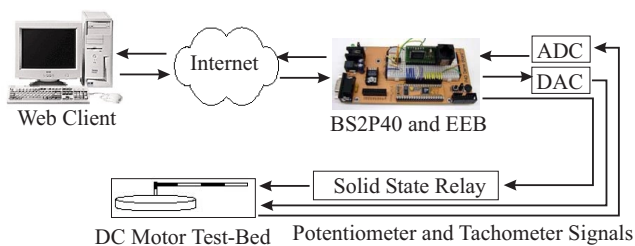


Figure 2: Hardware environment schematic

2.1. Microcontroller

In this paper, we focus on the BS2P40 microcontroller installed on a BS2P40 Demo Board development platform. These devices are manufactured by Parallax, Inc. [2]. The BS2P40 is a 40-pin Dual Inline Package (DIP) integrated circuit (IC) [3]. It is based on Uvicom Inc.'s SX48AC microcontroller. The BS2P40 is powered by a 6-14V direct current (VDC) power supply. A voltage regulator on the BS2P40 provides a steady 5VDC supply. The BS2P40 comes with ROM, 16KB Electronically Erasable

Programmable ROM (EEPROM), and a small amount of RAM. The BS2P40 is programmed in the PBasic language; the instruction set that is permanently stored on the BS2P40 ROM. The user-defined program is downloaded into the EEPROM from a PC through a DB-9 serial cable connection between the PC and the demo board. The excess EEPROM can be used for long-term data storage. The BS2P40 has 32 general-purpose digital I/O pins that are user-defined. The high position on a digital I/O pin refers to a 5VDC and a low position on a digital I/O pin refers to a 0VDC (ground potential). Each pin can source (supply) or sink (draw) a maximum current of 30mA. The 32 I/O pins on the BS2P40 at any given time can source/sink a maximum of 60mA. See [2] for more details on the BS2P40 hardware features.

2.2. Direct Current Motor Test-bed

The DC motor test-bed consists of an armature controlled DC motor, a continuous rotation potentiometer, a rotary optical encoder, a tachometer, and a power amplifier. This test-bed, shown in Figure 1, is manufactured by Quanser Consulting Inc. [4].

Both the potentiometer and the encoder sensors measure angular position of the DC motor. In this paper, only potentiometer and tachometer signals are used in the feedback control algorithm. The potentiometer outputs a +/-5VDC signal corresponding to the absolute angular position of the motor. The tachometer outputs a +/-5VDC signal corresponding to the angular velocity of the motor. The BS2P40 controls the DC motor angular position by applying a controlled voltage signal.

2.3. Miscellaneous Electronics

The DC motor test-bed sends and receives analog signals from the microcontroller using an LTC1296 12-bit ADC IC and a MAX537 12-bit DAC IC, respectively. The two ICs are controlled by the BS2P40 via serial communication. The LTC1296, manufactured by Linear Technology Inc. [5], is a 12-bit ADC (11-bit plus an additional sign bit) that has 8 single input channels, which can be used as 4 differential inputs, and requires a +/-5VDC power supply. The LTC1296 serves as a signal interface between the DC motor sensors and the BS2P40, converting voltage signals from the sensors to 12-bit data representations. The MAX537 IC, manufactured by Dallas Semiconductor Inc. [6], is a 12-bit DAC (11-bit plus an additional sign bit) that has 4 single output channels, which can be used as 2 differential outputs, and requires a +/-5VDC power supply. The MAX537 serves as a signal interface between the BS2P40 and the DC motor, converting a 12-bit data representation of the control voltage to a continuous voltage to the DC motor. A MAX764 DC-DC inverter,

manufactured by Dallas Semiconductor Inc. [7], powered by the BS2P40 demo board's +5VDC power supply, is used to obtain a +/-5VDC power supply for the LTC1296 and MAX537. In addition, a DMP6402A solid-state relay, manufactured by Crydom Inc. [8], is used to turn on/off the voltage supplied to the DC motor test-bed power amplifier using a single digital I/O on the BS2P40.

2.4. *Embedded Ethernet Board*

A 10Base-T EEB, manufactured by Embedded Ethernet.com [9], provides bi-directional ethernet communication capability to the BS2P40. The EEB is an 18 pin DIP IC that can be interfaced with the BS2P40 using 15 of its 32 I/O pins. It is powered by 5VDC from the BS2P40 demo board and has an RJ-45 port for connection to an ethernet cable. At the core of the EEB is the Crystal CS8900A IC, manufactured by Cirrus Logic. The CS8900A on the EEB provides interfaces for the 8-bit data bus (D0—D7), 4-bit address bus (A0—A3), and 4 control signals (AEN, WR, RD, IRQ). See Table 1 for the EEB pin assignments.

Table 1: Pin assignments for the embedded ethernet board

Pin(s) #	Label	Signal Type	Functionality
1	Vcc	Input	5VDC
2	GND	Input	Ground
3—10	D7—D0	Input/Output	CS8900A Data Bus
11	/AEN	Input	CS8900A Address Enable (Active low)
12	/WR	Input	CS8900A Write control (Active low)
13	/RD	Input	CS8900A Read control (Active low)
14	IRQ	Output	Interrupt signaled by this pin going high
15—18	A3—A0	Input	CS8900A Address Bus

The EEB data bus allows for binary data communication to and from the microcontroller, where these basic send and receive functionalities are controlled by sending commands to the EEB read and write pins. In addition, the EEB address bus allows the microcontroller to control the memory of the CS8900A. Figure 3 shows a picture of the EEB. Figure 4 shows the pin connections between the EEB, the BS2P40 demo board, and the BS2P40.

3. Software Environment

The software environment of this paper consists of primarily PBasic and Java. Ethernet communication between the BS2P40 and PC is accomplished by implementing a User Datagram Protocol (UDP) in PBasic. The PBasic program initiates and performs all data exchange to and from a PC via the EEB including encoding of sensory data, which is to be sent to a remote client, in the

UDP format and decoding of the UDP format position command and control gain parameters, which are received from the remote client. See [10] for more details on network communication using the UDP. A proportional plus derivative (PD) control algorithm for DC motor control is also implemented in PBasic. A Java applet, executing on a remote client, serves as a gateway to the BS2P40. Specifically, the Java applet presents a GUI to the remote client through which the user can give DC motor angular position commands and PD control gains to the BS2P40 and visualize sensory data received from the BS2P40. Next, we describe various elements of the software environment used in this paper.

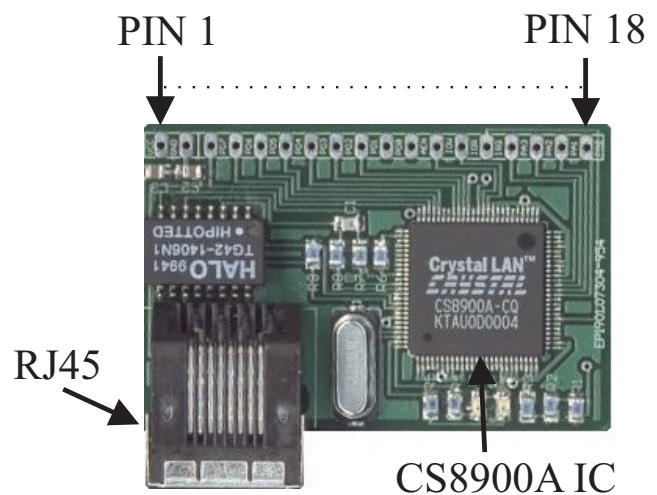


Figure 3: The embedded ethernet board

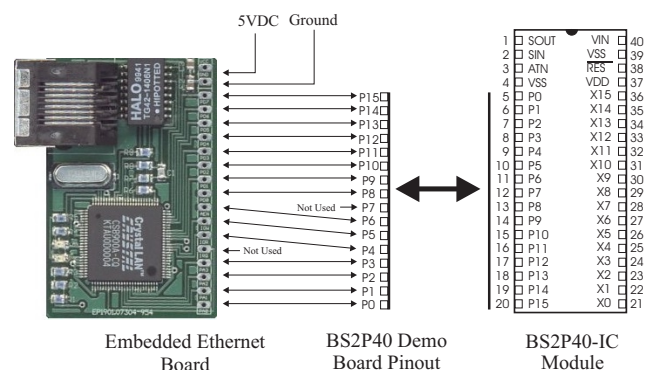


Figure 4: Pin connections between the EEB to BS2P40

3.1. *Ethernet Data Communication*

The BS2P40 microcontroller communicates with the remote client by creating, interpreting, sending, and receiving UDP datagram packets. A UDP datagram packet is a sequence of binary bits sent via the ethernet transmission wire. In the initial phase of the datagram packet, an IP and UDP header bit sequence is sent that contains information about the destination address, the

packet origin address, and the data checksum. The final phase of the datagram packet contains the data bit sequence. Figure 5 shows a generic UDP packet. The UDP is a choice method of ethernet communication because of the datagram packet's compact size compared to other transmission protocols, e.g., Transmission Control Protocol (TCP).

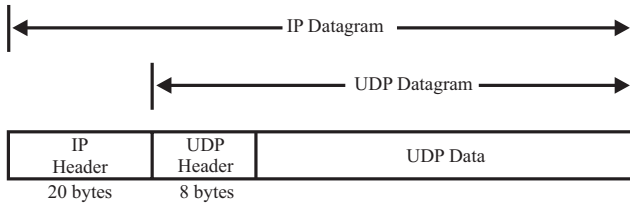


Figure 5: UDP encapsulation

3.2. *PBasic Program*

The BS2P40 is programmed using the PBasic programming language. It is a Basic-like language developed by Parallax, Inc. for the BS2 series microcontrollers. In addition to simple arithmetic, the BS2P40 executes certain task specific commands. See [11] for more details on PBasic programming language. We now provide a summary of our PBasic program.

In the first step, the PBasic code declares various variables used in the program in addition to the locations of various registers of the Crystal CS8900A. These registers are used to read and write ethernet packets. In the second step, the PBasic code initializes the EEB so that the EEB is ready to send or receive UDP datagram packets. In order to send data of arbitrary size via the ethernet, UDP datagram packets are sent 8-bits at a time until all the data is transmitted. Our data to be transmitted by the BS2P40 is 6-bytes long and contains two sequential measurements of the DC motor position (4-bytes) and the corresponding sample number (2-bytes) of the first measurement in the sequence. In addition, the data to be received by the BS2P40 is 6-bytes long and contains the commanded position of the DC motor, a proportional control gain, and a derivative control gain. In the third step, the microcontroller waits for an incoming packet. The fourth step of the PBasic code begins when the microcontroller receives a datagram packet. In this step, the microcontroller decodes the contents of the datagram packet information. The decoded information contains a user-defined 2-bytes long flag, an angular position command, a proportional control gain, and a derivative control gain. The user-defined flag is used to ascertain the source of the datagram packet. If the datagram packet does not have a valid user-defined flag, implying that this packet does not come from a valid user, then the PBasic code turns off the power amplifier using the solid-state relay and returns to the third step. However, if the

datagram packet has a valid user-defined flag, then the program goes to the fifth step, where the PBasic code saves the received DC motor angular position command, proportional control gain, and derivative control gain. In the sixth step, the power amplifier is turned on via the solid-state relay. The current DC motor position and velocity are then measured. Next, a PD control algorithm is used to compute the control voltage that needs to be applied on the DC motor. In the seventh step, the PBasic code transmits the control voltage to the DC motor via the DAC and power amplifier. At this stage, the PBasic code loops back to the sixth step once, and after the completion of the second cycle, saves the measured DC motor angular position during these two iterations. In the eighth step, the PBasic code encodes and transmits a datagram packet containing the previously obtained DC motor position data sequence. Finally, the PBasic code loops back to the third step. See Figure 6 for a flow diagram of the PBasic code.

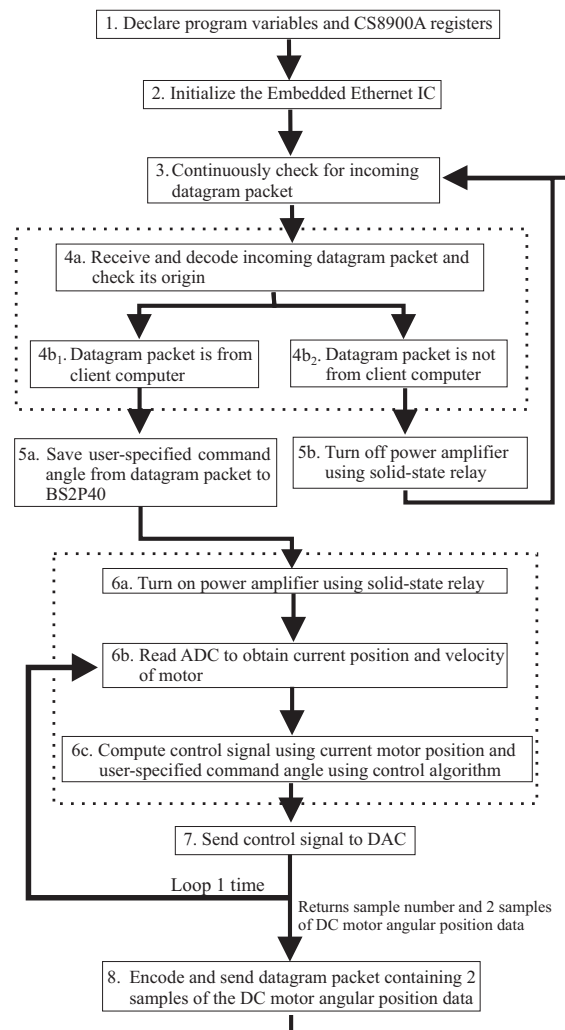


Figure 6: Flow of events in the PBasic program

3.3. Java Interface

A GUI, which runs on a remote client computer, has been created using the Java applet technology [12]. This GUI allows remote clients using any Java compatible operating system to interact with our experimental test-bed. The GUI consists of three Java applet libraries and one main Java program.

The first Java applet library includes functionality for a horizontal slider bar. This object is dragged left or right to specify a 0° – 360° command for DC motor angular position. The user-selected angle on the slider bar is written to a text file. The second applet library provides functionality for two text boxes to receive user inputs. The first text box allows the user to enter a proportional control gain parameter between 0–1.00 (Volts/rad). The user clicks the “Update” button on the GUI to submit this input. The second text box allows the user to enter a derivative control gain parameter between -0.6–0.0 (Volts-sec/rad). This is also submitted by clicking the “Update” button. Similar to the slider bar object, the user-selected gains from the text box object are written to a text file. The third Java applet library is the PlotLive component [13]. This object reads the current position of DC motor obtained from the BS2P40 and plots it against the corresponding sample number.

The main Java program integrates the aforementioned three Java applet libraries for data manipulation and display. In addition, using Java’s network data communication library, the main program transmits and receives the user inputs (i.e., the commanded DC motor position and the control gains data) and current position of DC motor, respectively, to/from the BS2P40. See Figure 7 for a flow diagram of the main Java program.

Remark 3.1. To aid in the design of the PD control gain parameters, a Matlab Web Server [14] based control design panel is also provided on [1]. This control panel is a web page that takes in user parameters (e.g., desired set-point, settling time, percent overshoot) using standard html forms and outputs to the web page, control gain parameters, a simulated DC motor response, and a Matlab script displaying step-by-step instruction for computing these control gain parameters.

4. Illustrative Example

In this example, a step command, provided by a remote web-client running a Java applet GUI, changes the command angle of the DC motor arm. First, the user commands the DC motor to maneuver from 50° to 100° using the horizontal slider on the GUI. Next, the user commands the DC motor to maneuver from 100° to 250° . In this example, the controller gains have been set as $K_p=0.8$

(Volts/rad) and $K_d=-0.4$ (Volts-sec/rad). Figure 8 shows the results of the GUI interface after performing the specified command angle changes. The reader can remotely access and evaluate the current version of our experimental setup by accessing and following the instructions on [1].

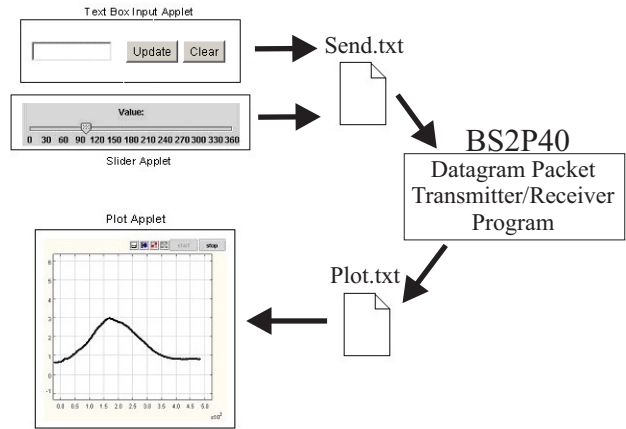


Figure 7: Java program interaction

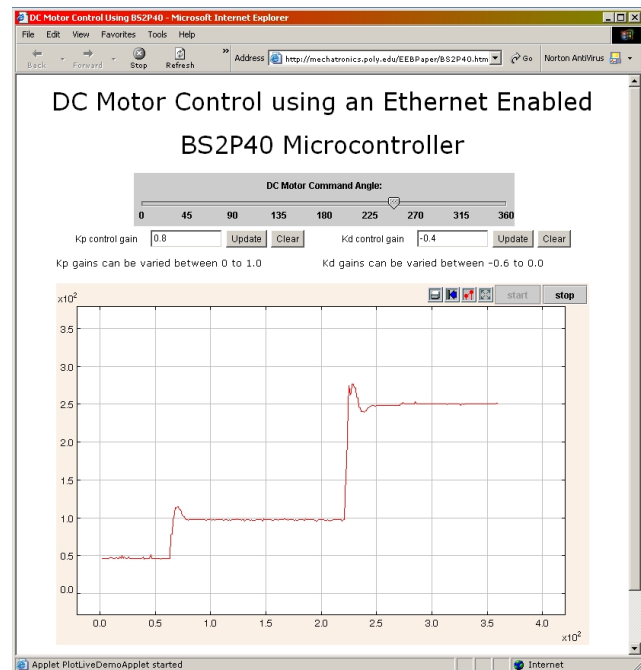


Figure 8: Java applet GUI screen capture

5. Future Enhancements

The following hardware and software enhancements are planned to extend the capabilities of our ethernet-enabled microcontroller environment.

- Enhance the Java GUI to host additional user-interface and data visualization tools e.g., 3-D plots, miscellaneous controls (e.g., switches, knobs, etc.), and Virtual Reality Modeling Language (VRML) based 3-D animations.

- Implement a scheme for user prioritization/queue.
- Enable software-based switching of control architectures (PD, Proportional plus Integral plus Derivative (PID) control, Linear Quadratic Regulator (LQR), etc.).
- Integrate a low-cost embedded web server with our current hardware to provide web-hosting capabilities.

6. Conclusion

In this paper, we exploited an EEB for ethernet data communication between a BS2P40 and a remote web-client PC. Utilizing UDP datagram packets, DC motor position sensor measurements were transmitted from the BS2P40 to the remote web-client PC while command angles and control gain parameters were transmitted from the remote web-client PC to the BS2P40. In addition, a PD controller was implemented on the BS2P40 to control the DC motor arm. On the remote web-client PC, a Java applet GUI was provided for data visualization and parameter adjustment “on-the-fly.” Specifically, a generic Java plotting library was used to plot the DC motor position history, a generic Java horizontal slider was used to send command angles to the BS2P40, and a text box library was used to update the control gain parameters of the PD controller on the BS2P40. This paper illustrates the Internet capabilities imparted to a microcontroller by the use of embedded ethernet for data communication and Java for GUI functionality.

References

- [1] <http://mechatronics.poly.edu/EEBPaper/>, website of Internet-based remote control using a microcontroller and an embedded ethernet board.
- [2] <http://www.parallax.com/>, website of Parallax, Inc.
- [3] http://www.parallax.com/detail.asp?product_id=BS2P40-IC, website of Parallax, Inc. developer and distributor of 40 pin Basic Stamp 2 (BS2P40) microcontroller.
- [4] http://www.quanser.com/english/html/products/fs_product_challenge.asp?lang_code=english&pcat_code=exp-rot&prod_code=R1-posserv, website of Quanser Consulting Inc. developer and distributor of the DC motor test-bed.
- [5] <http://www.linear.com/prod/datasheet.html?datasheet=324>, website of Linear Technology Inc. developer and distributor of the LTC1296 ADC.
- [6] http://www.maxim-ic.com/quick_view2.cfm?qv_pk=1125, website of Dallas Semiconductor Inc. developer and distributor of the MAX537 DAC.
- [7] http://www.maxim-ic.com/quick_view2.cfm?qv_pk/1171/ln/en, website of Dallas Semiconductor Inc. developer and distributor of the MAX764 DC-DC inverter.
- [8] <http://dkc3.digikey.com/PDF/T041/1028.pdf>, website of a Digikey catalog page containing specifications for Crydom DMP6402A solid-state relays.
- [9] <http://www.embeddedethernet.com>, website of Embedded Ethernet.com developer and distributor of the Embedded Ethernet Board.
- [10] W. R. Stevens, *TCP/IP Illustrated Volume 1*, Addison-Wesley, Boston, MA (1994).
- [11] *Basic Stamp Programming Manual*, v2.0c, Parallax, <http://www.parallax.com/dl/docs/prod/stamps/basic%20stamp%20manual.pdf>.
- [12] J. Zukowski, *Mastering Java 2, J2SE 1.4*, Sybex, Alameda, CA, 2002.
- [13] <http://ptolemy.eecs.berkeley.edu/ptolemyII/>, website of Ptolemy II a Java package containing plotting libraries.
- [14] <http://www.mathworks.com/products/webserver/>, website of the Matlab Web Server.